

A S T H Ë I M E R

CELEBRATING 10 YEARS

*A small taste of our design process...*





ASTHEIMER is celebrating 10 years of designing the products of the future.

We are a boutique automotive design studio, specialised in the development of electric and autonomous vehicles.

Since 2009 we have designed hundreds of successful products, ranging from concept vehicles to one-off super yachts, to chocolate bars that have sold in their millions. Plus, a whole lot in between including furniture, consumer electronics and FMCG.

We started off life in the attic of a boat yard, then in a converted garage, and now we're based in a state of the art studio in the heart of England.

What holds true to every project we do, is our thorough design process, our meticulous attention to detail and the quality of our execution. Above all an underlying belief in why we are doing what we are doing; improving the products we design, aesthetically, functionally and environmentally.

We have been lucky enough to work with global leaders in their sectors who have bought into our design philosophy, as Antoine de Saint Exupery famously said..

"Perfection is achieved, not when there is nothing more to add, but when there is nothing left to take away."

Design is the process where an idea comes to life; form development starts with pencil on paper...

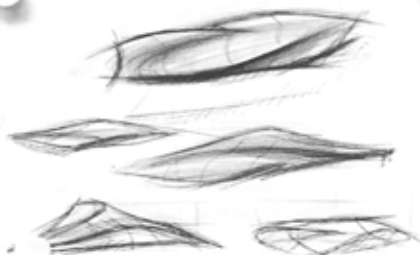


ALBION

ALBION

ALBION

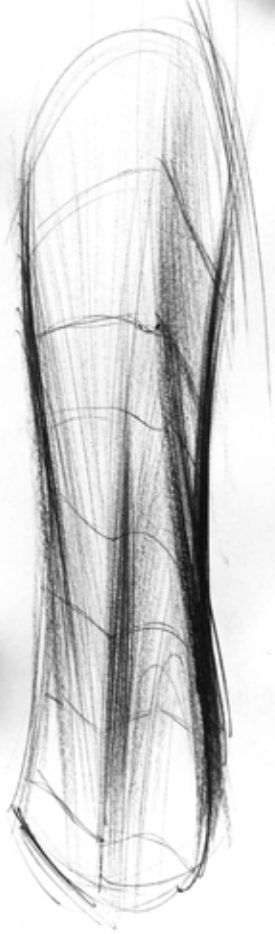
ALBION

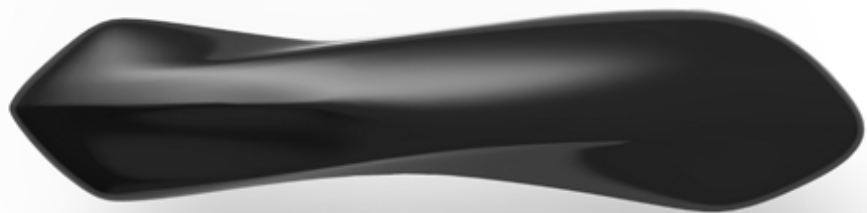
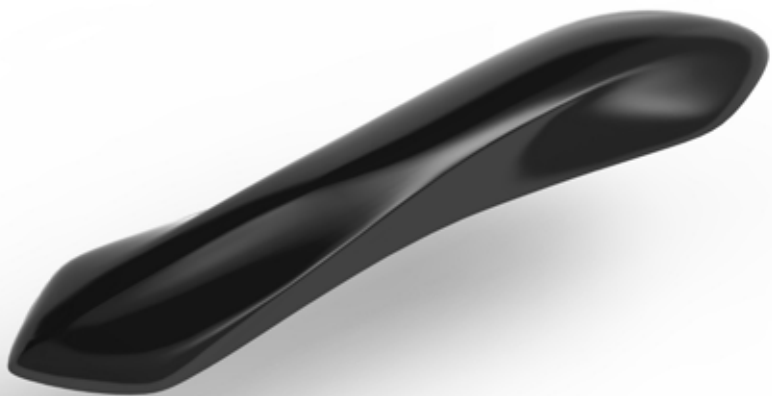


*leaf from magnolia*



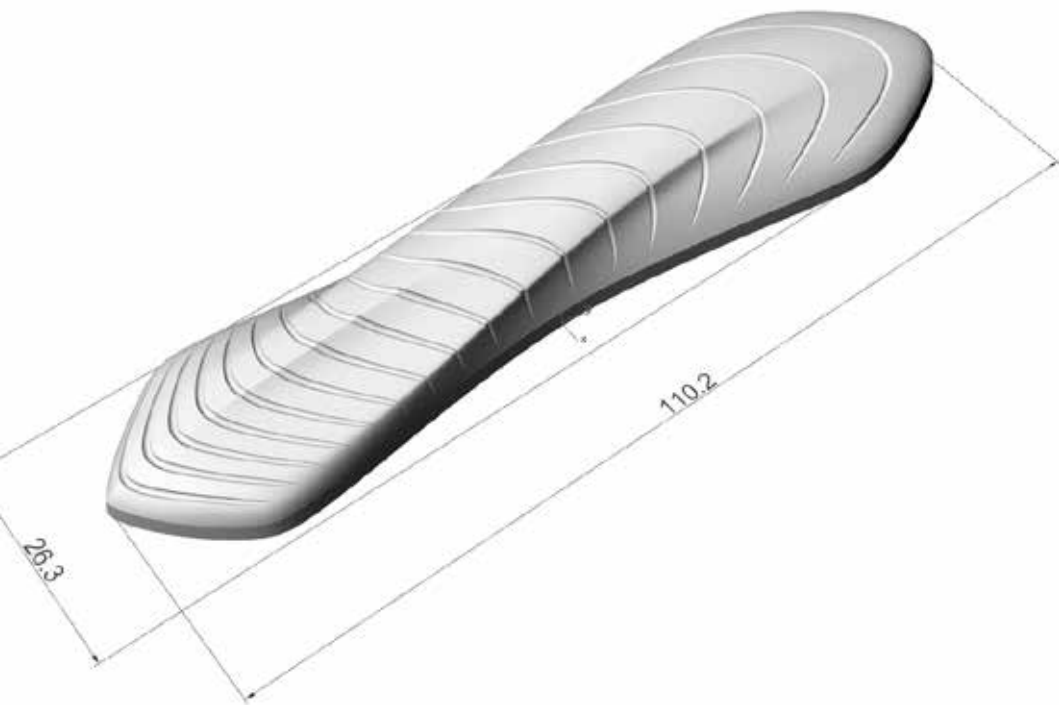
*paramed  
area*







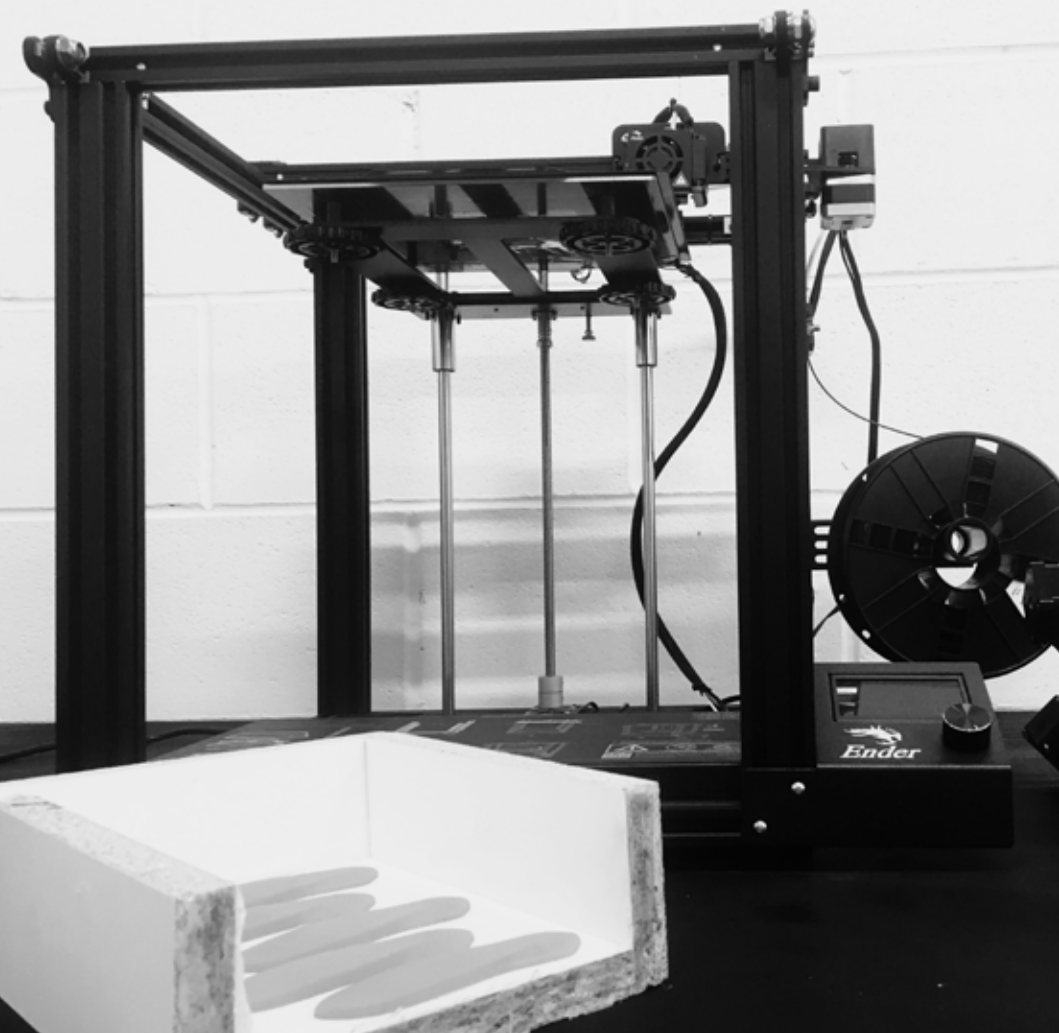
AAD  
ALGORITHMS-  
AIDED  
DESIGN



The design is further developed in various 3D modelling software. We use nurbs, polygons, sub-D or fully parametric algorithm based programs depending on what form, function and material the product has.









Rapid prototyping takes place in our workshop. We use our in house 3D printing, alongside CNC to enable us to build accurate physical models to validate and test our designs.

In this case, we also made the moulds for production, using a food grade silicon with 10 cavities to help with manufacturing efficiency.



• Liquid Rubber  
• Liquid Plastics  
• Solid Foams  
• Flexible Foams  
• Adhesives

TITAN

ASTHEIMER



To produce the chocolate we went to our friends at Henley Chocolates...  
We have used a single origin cocoa from Madagascar, full bodied fruity flavour with hints  
of coffee and liquorice! This chocolate is naturally dairy free (although it may contain  
tiny traces of dairy and nuts)













Feel free to drop by for a coffee and a chat...

Unit 9 St George's Business Park

Lower Cape

Warwick

CV34 5DR

+44 (0) 1926 842 354

[www.astheimerltd.com](http://www.astheimerltd.com)

[carsten@astheimerltd.com](mailto:carsten@astheimerltd.com)